



# **Installation** Instructions

## EQ-300-85 Whole House Well Water Filter

Welcome to the Aquasana experience. You are about to enjoy clean, clear water and the peace of mind that comes from knowing award winning filter technology is working for you.

# Contents



EQ-300R-85 Rhino



Install kit:  
4 unions  
8 nipples 3/4"x3"  
1 ball type shut off valve  
1 filter housing wrench



Replace:  
EQ-304

5 micron pre-filter unit  
Model: EQ-PRE-34PT



Replace:  
EQ-PFC.35

0.35 micron post-filter unit  
Model: EQ-PRE-34PT



Replace:  
AQ-UV-LAMP

UV post-filter  
mounting kit

UV anti-bacterial post-filter  
Model: AQ-UV-20



You can be confident your Aquasana Whole House system is providing clean, clear water to every tap in your home.



## Installation – check precautions before installing

1. KEEP THE UNIT IN AN UPRIGHT POSITION AT ALL TIMES.
2. Remove the red shipping caps from the inlet & outlet ports on the main housing.
3. **Precondition the unit by “Surge Flushing”:** It is very important that this system is flushed properly prior to final installation. The granular carbon medium used in the bottom tank contains 1-2% by volume of carbon fines that should be flushed out prior to use. The best method for purging these carbon fines from the medium bed is “Surge Flushing”:

Using the supplied adapter, connect a garden hose to the inlet port so that the water will flow into the system and out of the outlet port. Slowly turn on the water and allow the discolored water to flow from the outlet into a bucket or drain. The first few gallons will appear black and cloudy due to carbon fines. After an initial 2-5 minute flushing, begin a period of “Surge Flushing.” Turn the water supply on for 30 seconds and then off for 30 seconds repeatedly for 5-10 minutes or until initial surge of water is completely clear and free from discoloration and cloudiness. Once the unit has been properly flushed, be sure the white washers are properly set inside the inlet and outlet ports. Disconnect it from the garden hose and position it for final installation.



4. Turn off source water supply.
5. Install the unit to the main water supply using the supplied components. Do not over tighten fittings, as this may cause leakage and broken fittings. **Do NOT use pipe dope.** The use of pipe dope voids the warranty
6. **IMPORTANT:** The inlet piping assembly (valve, pre-filter, main filter unit, post-filter, UV filter, union and nipples) must be firmly braced and supported.
7. Once installation is complete, slowly turn the water on and inspect for leaks.
8. Once the unit is installed and checked for leaks, open the water faucet closest to the installed unit and allow water to run for 5-10 minutes for the final flushing period.

**THIS UNIT MUST BE INSTALLED BY A  
LICENSED PLUMBER TO VALIDATE THE WARRANTY**

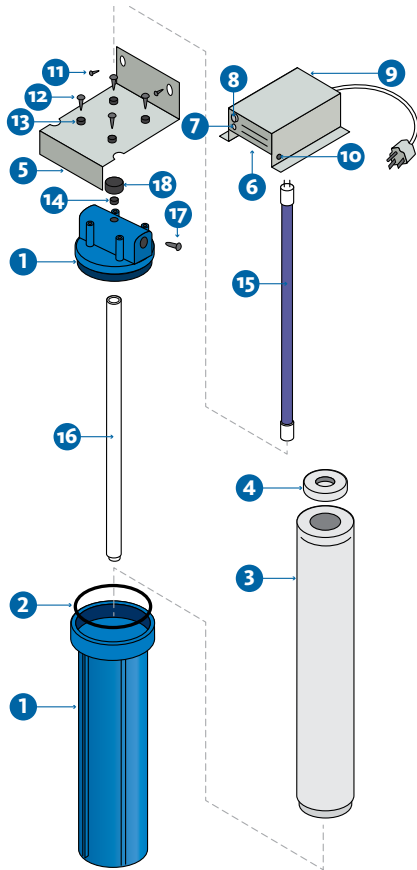
The EQ-300-85 Well system filters out sediment, protects your home from the scale that comes from hard water and includes a UV filter to kill bacteria.

## UV Lamp assembly components

UV well water filter

Item description

1. Housing, uv, sump, "o" ring, head uv
2. "O" ring, sump #10/20
3. Sleeve, channeling s/s, #20
4. Gasket, sleeve
5. Mounting bracket, 1 sump
6. Switch, safety
7. Indicator, led
8. Fuse, 1a type 3ag
9. Module, uv control #20
10. Screw, 6/32 x 3/8"
11. Screw, #10 x 3/4"
12. Screw, 1/4" x 1-1/2"
13. Washer, #14 nylon
14. "O" ring, quartz sleeve, standard (2)
15. Lamp uv #20
16. Sleeve quartz #20, with "o" rings
17. Rod, safety plunger
18. Spacer, bushing #10/20



Source Water supply		Chemical Parameters	
Feed Water Pressure*	20 – 75 psi (138 – 517kPa)	Hardness (CaCO <sub>3</sub> )	< 120 (7 gpg)
Feed Water Temperature	38° – 105°F (3.3 – 40.5°C)	Iron (Fe)	< 0.3
pH Range	6.5 – 9.5	Manganese (Mn)	< 0.05
Total Dissolved Solids	< 1500 mg/L	* Water pressure must not exceed 75 psig (517 kPa) or a pressure regulator must be installed.	
Total Suspended Solids	< 10 mg/L		
Turbidity	< 5 NTU		

## Mounting bracket and plumbing

This guide covers installation and maintenance of a basic "generic" system. Installer determines configuration of each system and must adapt these instructions to meet the specific requirements for that configuration. The use of pipe dope by a plumber voids the warranty. All inter-component connections use standard plumbing components and tools.

## Additional UV installation instructions

Caution: do not use any damaged component.

If damage is found, contact Aquasana at 866 662 6885.

1. Unpack boxes and verify that all required components have been received.
2. Inspect each component for damage.
3. Determine location for installation of the UV system:
  - A. The UV well water filter system must be installed with the sumps oriented vertically.
  - B. Mounting point should allow sufficient room above and below UV system to service the sumps and UV lamp without removing the UV system. The minimum space is 20" (above and below).
4. For ease of mounting, reduce the weight of the larger systems by removing the sumps and filters prior to installing the mounting bracket.
5. Select a location and install the mounting bracket using the provided screws

## Warnings

- Never look directly at a lighted UV lamp.
- Ultraviolet rays can be harmful to eyes.
- Always shut off water to system and disconnect power when servicing.
- Assembly is required before installation.
- Internal components are fragile.
- Follow instructions carefully!
- This system must be installed in accordance with applicable city, country, and local plumbing codes.
- Aquasana's products are designed to provide years of trouble-free service if properly maintained.
- Retain these instructions for future service or usage information.

The UV Filter included with your Aquasana Whole House Well Water filter is the best line of defense against bacteria that other filters don't treat.

## Use and Care

- Customization options are available to address any specific concerns you may have. The best way to establish your specific needs is to conduct a water test. Contact us by phone at 866-662-6885 to make arrangements and get recommendations.

### Component one: Sediment Pre-filter

- Sediment levels vary from one location to another. During the first year of use, a visual inspection monthly is recommended. The sediment pre-filter is white when you initially install it. Once you can no longer see white, it is time to replace the filter with a new one (EQ-304). Allowing sediment to continue to collect can cause clogging and prevent the flow of water into your home.

### Component two: Rhino 2 stage Whole House filter

- This filter unit has a capacity of 300,000 gallons. You replace the unit in its entirety every 300,000 gallons. Check with your plumber at the time of installation about adding a meter to your system. Typically the average family of four will consume that amount in 3-5 years. Unions are located on each side of the tank for ease of replacement. It is not necessary to contract a plumber. The replacement part number is EQ-300R-85.

### Component three: Post Filter

- The post-filter, utilized to remove particulates up to 60 times smaller than the eye can see, should be replaced every 9 months. This is an important step in the sterilization of bacteria in the UV disinfection process. The water needs to be as pristine as possible to prevent harmful bugs “hiding” behind any particulates. An added benefit is that any cysts (such as giardia or cryptosporidium) will also be captured, preventing your family from exposure.

### Component four: UV disinfectant

- Annual replacement of the bulb is a must. Contact Aquasana directly for an AQ-UV-Lamp. The steps to replace the bulb are included with the replacement bulb.

## Operating specifications

1. Read all precautions, installation, and operating instructions carefully and completely before installing the unit.
2. Do not install this filter where the line pressure may exceed 75 psi. Operating pressure range: 20psi – 100psi.
3. The rated service flow is 7 gallons per minute; rated capacity is 300,000 gallons.
4. Sediment pre-filter cartridges should be changed as needed. (When you can no longer detect the original white color of the filter, it is time for replacement. Sediment levels vary greatly, so regular visual inspections are recommended during the first year.)
5. Install on cold water lines only. Operating temperature range: 40° – 90°F. Protect unit from freezing.
6. Do not install the unit on its side or in direct sunlight.
- 7. Installation of the filter must comply with existing state and local plumbing codes.**
8. Cleaning: use only warm, soapy water to clean the outside of the housing. Rinse well with fresh, clean water. Never use chemical cleaning products on the filter's exterior surface because they may damage the filter housing.
9. This product is not intended for use with water that is microbiologically unsafe or of unknown quality without adequate disinfection before or after the unit.
10. Use of pipe dope by a plumber voids the warranty.

## Precautions

- Aquasana recommends using only plastic fittings to connect the inlet and outlet ports of the UV well water filter system. Use of metal male fittings inside of plastic female threaded heads voids the warranty.
- Do not install clear or translucent tubing on the outlet side of the UV filter.
- Do not over tighten fittings connected to inlet/outlet ports of the UV well water filter system.
- **Water pressure must not exceed 75 psi (517 kpa)** or a pressure regulator must be used. Warranty is void if the unit is used with pressure exceeding 75 psig (kpa). Higher pressures may damage equipment and may not allow for proper exposure time with UV lamp or both.
- Do not install pump on outlet side of system as damage to the quartz sleeve may occur. If pump is required, install it on inlet side of system and verify output pressure does not exceed 75 psig (517 kpa).
- The system will not function properly if water flow is reversed.
- **Filter is only to be used on a cold water line.**

**Aquasana is not liable for consequential or incidental damages due to improper installation.**



## “Pure Satisfaction”

All Aquasana products offer a 90-day 100% money back guarantee. (A 3 year warranty is included, which covers defects in materials and workmanship.) If for any reason you are not satisfied with your purchase, simply call us, or the dealer you purchased from, for a Return Authorization Code and a full refund will be promptly issued upon return. Thank you for choosing Aquasana!

## Specifications

Model: EQ-300-85

Replacement cartridges :

Main tanks: EQ-300R

Pre-filter: EQ-304

Post-filter: EQ-PFC.35

UV-bulb kit: AQ-UV-20

Rated service flow, 7 gpm

Max working pressure: 75 psi

Max operating temperature: 40-90° F

Max capacity: 300,000 gal

Do not use with water that is microbiologically unsafe or of unknown water quality without adequate disinfection before or after the system. Systems certified for cyst reduction may be used on disinfected waters that may contain filterable cysts.

The EQ-300-85 system provides clean water from your well that is safe for consumption and will extend the life of your appliances by reducing sediment and scaling.



**Sun Water Systems** | [www.aquasana.com](http://www.aquasana.com)  
6310 Midway Road | Haltom City, Texas 76117  
USA 866.662.6885 | Canada 877.332.7873

**For exclusive deals**  
 [facebook.com/aquasana](https://facebook.com/aquasana)  
 [twitter.com/aquasana](https://twitter.com/aquasana)